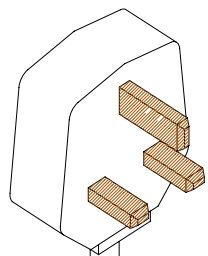
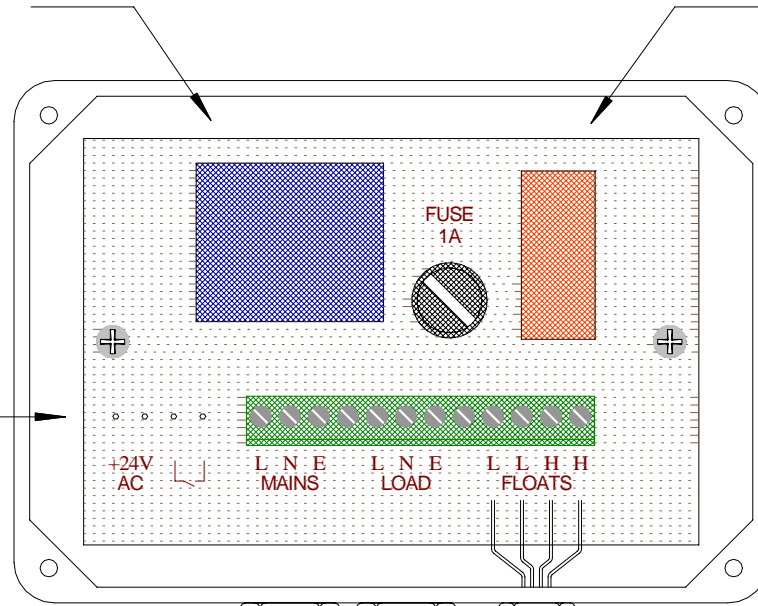


SAS-1 Level Control Relay (Pump-Out)

Transformer
Supplies safe voltage to the level switches that come into contact with the water

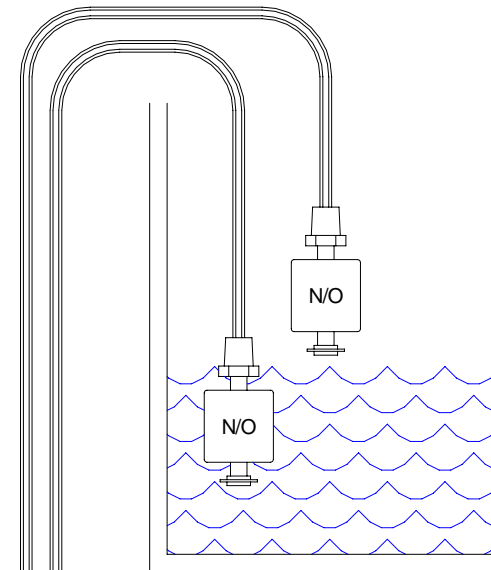
Control Relay
Provides high power switching for the load output
240 Volt / 8 Amp Max.

Optional Aux. Contacts
Can be used for high or low level back up alarm



3 Pin Plug (Not Supplied)
must be fitted with a fuse to suit appliance being switched.
Also available with an RCD protected plug

Load Output 240V AC
May be used to connect pumps, solenoids, valves etc



Typical Application (Pump Out)
When Level reaches the top float liquid is pumped from tank until level falls to bottom float, thus controlling the level between the two points.
(single float may be used by linking out HH terminals)